



560 / 680 "GRAY AND BLACK"

PART MANUAL

Revision 11-15-2022

Web version

Table of Contents

Page	Content
1	SAFETY LABELS, FRONT
2	SAFETY LABELS, BEHIND DOORS/SHIELDS
3	SAFETY LABELS, REAR
4	SAFETY LABELS, LOW SIDE
5	FRONT EXTERNAL LEFT
6	FRONT EXTERNAL RIGHT
7	SCALE SUPPORT AND SCALE PARTS
8	PTO
9	BELT DRIVE, LEFT
10	BELT DRIVE, RIGHT
11	FRONT AUGER DRIVE LEFT
12	FRONT AUGER DRIVE, RIGHT
13	680 REAR DRIVE
14	560 REAR DRIVE
15	ELEVATOR
16	ELEVATOR CHAIN AND HINGED MAGNET
17	LEFT SPIRAL ASSY
18	RIGHT SPIRAL ASSY
19	SPINDLE AND HUB
20	WHEEL HUB AND BEARINGS
21	REAR EXTERNAL
22	POLY LINERS, LEFT
23	POLY LINERS, RIGHT

LEFT HAND DISCHARGE IS ILLUSTRATED. A RIGHT HAND DISCHARGED WOULD BE A MIRROR OF THIS IMAGE.

7
DANGER
CHUTE

⚠ DANGER

STAY CLEAR OF CHUTE AREA!

CHUTE POSITION AND DISCHARGE CHAIN ARE REMOTELY CONTROLLED AND CAN OPERATE WITHOUT MIXER RUNNING. CHUTE RAISES AND LOWERS RAPIDLY, AND CHAIN STARTS WHEN CHUTE LOWERS.

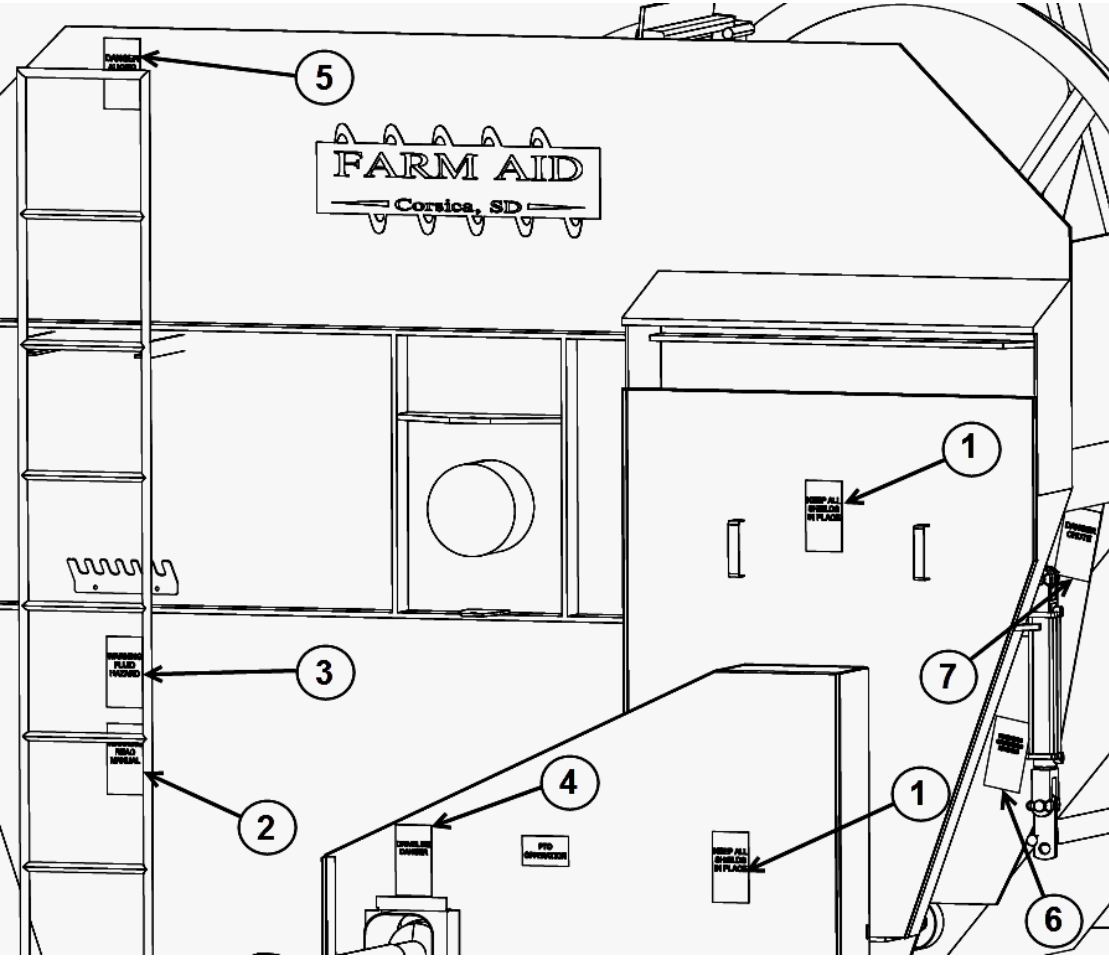
6
WARNING
CRUSHING

⚠ WARNING



CRUSHING OF HAND OR FINGERS

TO PREVENT SERIOUS INJURY, STAY CLEAR OF MOVING PARTS.



1
WARNING
SHIELDS

⚠ WARNING



KEEP ALL SHIELD IN PLACE. KEEP HANDS AWAY FROM MOVING PARTS TO PREVENT SERIOUS INJURY OR DEATH.

2
WARNING
READ MANUAL

⚠ WARNING

TO PREVENT SERIOUS INJURY OR DEATH.

- READ AND UNDERSTAND OPERATOR'S MANUAL BEFORE USING. REVIEW ALL SAFETY PRECAUTIONS ANNUALLY.
- PLACE ALL CONTROLS IN NEUTRAL, STOP TRACTOR ENGINE, SET PARK BRAKE AND WAIT FOR ALL MOVING PARTS TO STOP BEFORE SERVICING, ADJUSTING, REPAIRING OR UNPLUGGING IMPLEMENT.
- DO NOT ALLOW RIDERS.
- SECURELY ATTACH TO TOWING UNIT USING A HARDENED PIN WITH A RETAINER AND AN AUXILIARY ATTACHING DEVICE.
- BE SURE ALL GUARD AND LOCKS ARE IN PLACE BEFORE STARTING.
- KEEP HANDS, FEET, HAIR AND CLOTHING AWAY FROM MOVING PARTS.
- BE SURE REFLECTORS AND SMV ARE VISIBLE BEFORE TRANSPORTING.
- DO NOT EXCEED A SAFE TRANSPORT SPEED.
- USE HAZARD FLASHERS ON TRACTOR WHEN TRANSPORTING.
- WHEN REPAIRING OR SERVICING IMPLEMENT, REFER TO OPERATOR'S MANUAL.

3
WARNING
HIGH PRESSURE

⚠ WARNING



TO PREVENT SERIOUS INJURY, OR DEATH.

- RELIEVE PRESSURE ON HYDRAULIC SYSTEM BEFORE SERVICING OR DISCONNECTING HOSES.
- WEAR PROPER HAND AND EYE PROTECTION WHEN SEARCHING FOR LEAKS.
- USE WOOD OR CARDBOARD INSTEAD OF HANDS.
- KEEP ALL COMPONENTS IN GOOD REPAIR.

4
DANGER
DRIVELINE

⚠ DANGER



ROTATING DRIVELINE HAZARD

- TO PREVENT SERIOUS INJURY OR DEATH FROM ROTATING DRIVELINE.
- KEEP ALL GUARDS IN PLACE WHEN OPERATING.
- KEEP HANDS, FEET, HAIR, AND CLOTHING AWAY FROM MOVING PARTS.

5
DANGER
AUGER

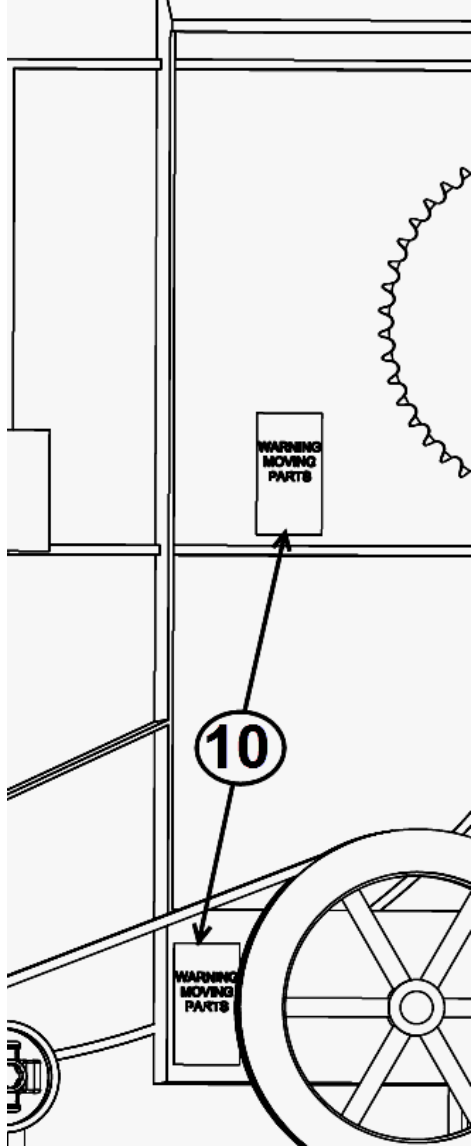
⚠ DANGER

NO ENTRY



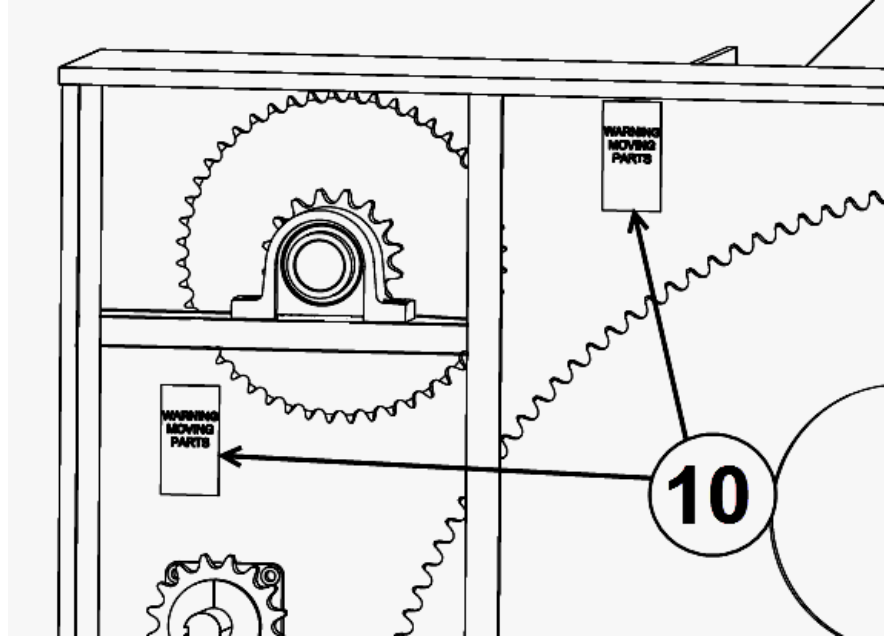
AUGER ENTANGLEMENT HAZARD

- TO PREVENT SERIOUS INJURY OR DEATH FROM ROTATING PARTS.
- DO NOT ENTER MIXING CHAMBER WHEN TRACTOR IS RUNNING OR WHEN AUGER IS IN MOTION.
- KEEP HANDS AND FEET AWAY FROM MIXING CHAMBER.



FRONT

SHOWN WITH BELT GUARD
AND CHAIN COVER REMOVED



REAR

SHOWN WITH BOTH DOORS OPEN/REMOVED

10

10
WARNING
MOVING PARTS

LEFT HAND DISCHARGE IS ILLUSTRATED. A RIGHT
HAND DISCHARGED WOULD BE A MIRROR OF THIS
IMAGE.

! WARNING

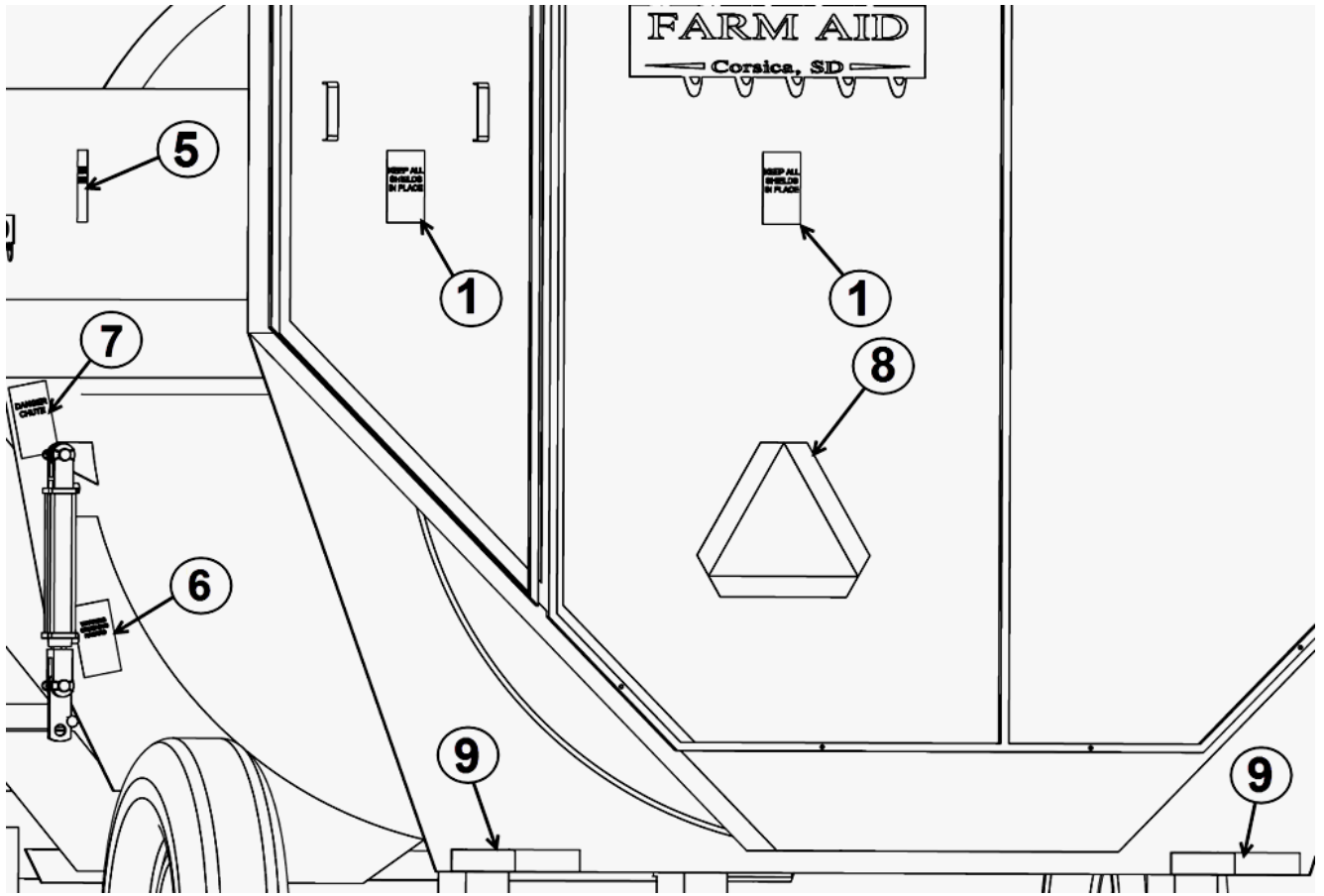
MOVING PART HAZARD




TO PREVENT SERIOUS INJURY, OR DEATH FROM MOVING PARTS:

- CLOSE AND SECURE GUARDS AND SHIELDS BEFORE STARTING.
- KEEP HANDS, FEET, HAIR, AND CLOTHING AWAY FROM MOVING PARTS.
- DISCONNECT AND LOCKOUT POWER SOURCE BEFORE ADJUSTING OR SERVICING.
- DO NOT STAND OR CLIMB ON MACHINE WHEN OPERATING.

LEFT HAND DISCHARGE IS ILLUSTRATED. A RIGHT HAND DISCHARGE WOULD BE A MIRROR OF THIS IMAGE.



1
WARNING
SHIELDS

WARNING

KEEP ALL SHIELD IN PLACE. KEEP HANDS AWAY FROM MOVING PARTS TO PREVENT SERIOUS INJURY OR DEATH.

5
DANGER
AUGER

DANGER

NO ENTRY

AUGER ENTANGLEMENT HAZARD

TO PREVENT SERIOUS INJURY OR DEATH FROM ROTATING PARTS.

- DO NOT ENTER MIXING CHAMBER WHEN TRACTOR IS RUNNING OR WHEN AUGER IS IN MOTION.
- KEEP HANDS AND FEET AWAY FROM MIXING CHAMBER.

6
WARNING
CRUSHING

WARNING

CRUSHING OF HAND OR FINGERS

TO PREVENT SERIOUS INJURY, STAY CLEAR OF MOVING PARTS.

7
DANGER
CHUTE

DANGER

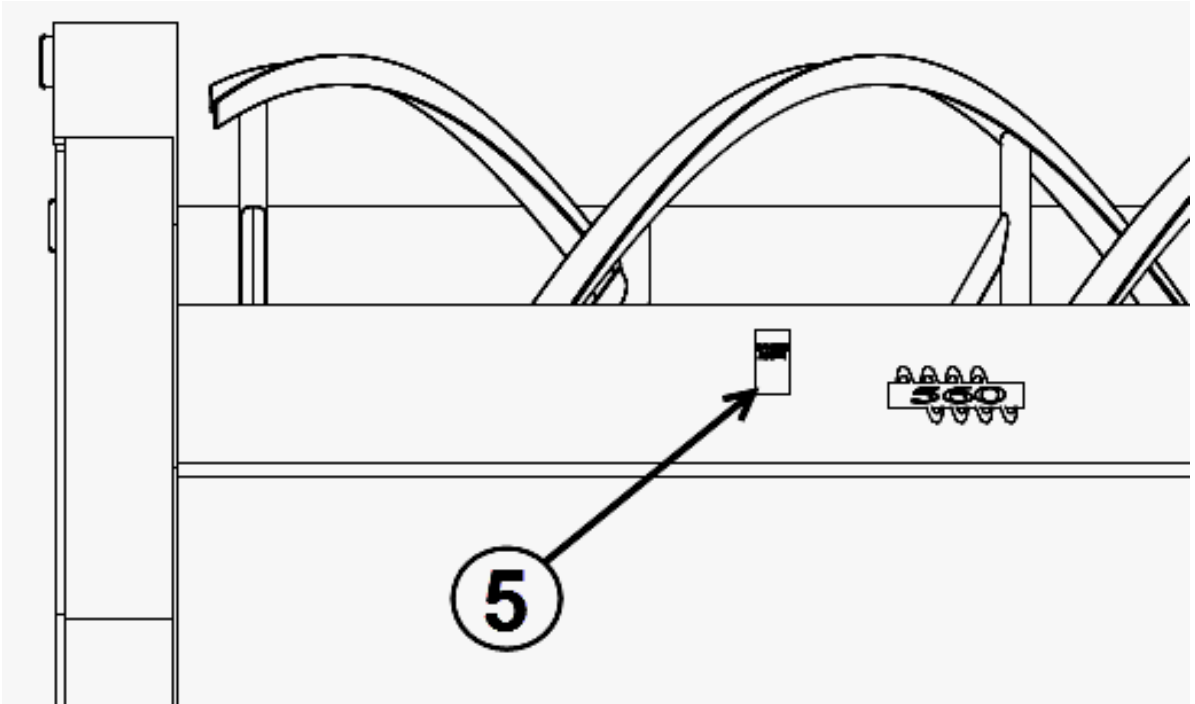
STAY CLEAR OF CHUTE AREA!

CHUTE POSITION AND DISCHARGE CHAIN ARE REMOTELY CONTROLLED AND CAN OPERATE WITHOUT MIXER RUNNING. CHUTE RAISES AND LOWERS RAPIDLY, AND CHAIN STARTS WHEN CHUTE LOWERS.

8
SLOW MOVING
VEHICLE LABEL
P/N FA357

9
REFLECTIVE
LABEL
P/N FA359

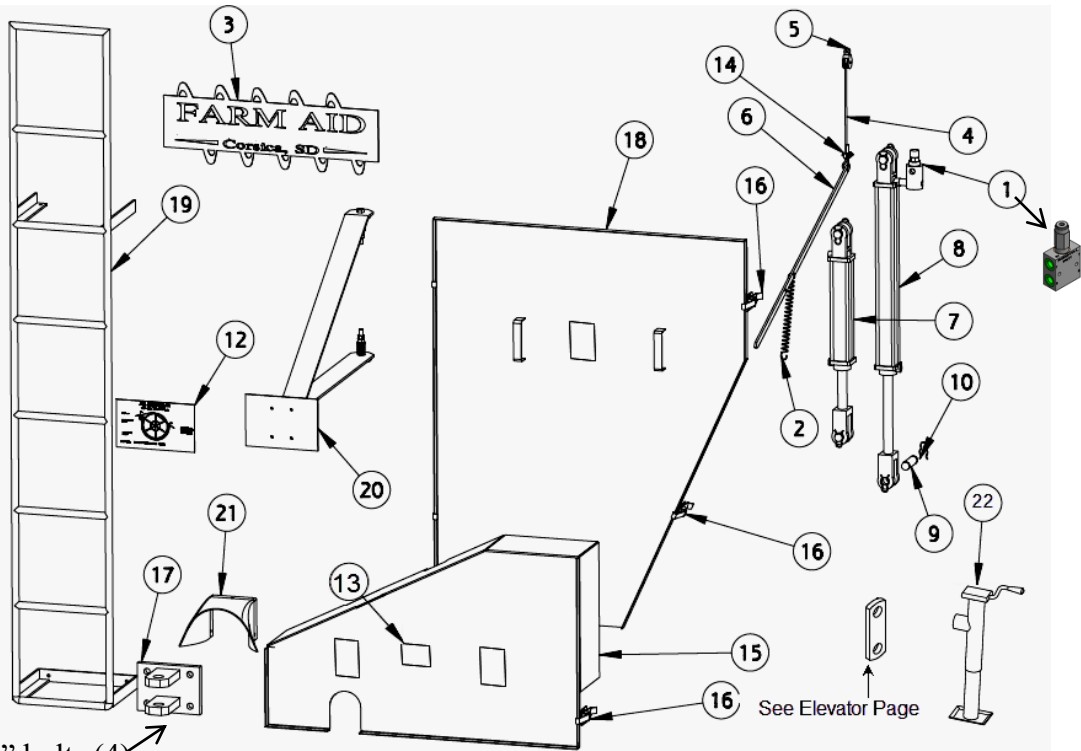
LEFT HAND DISCHARGE IS ILLUSTRATED. A RIGHT HAND DISCHARGE WOULD BE A MIRROR OF THIS IMAGE.



5
DANGER
AUGER



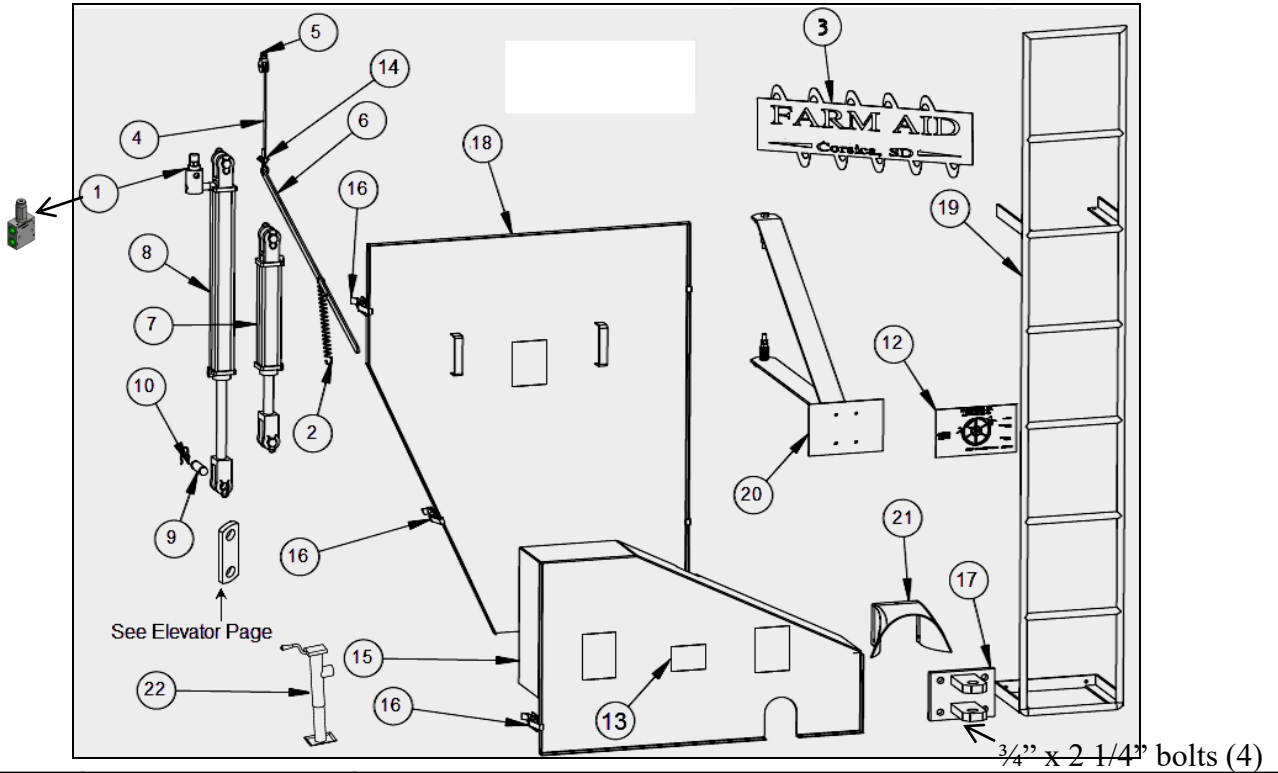
**EXTERNAL FRONT, MODELS 680 AND 560
LEFT HAND DISCHARGE**



3/4" x 2 1/4" bolts (4)

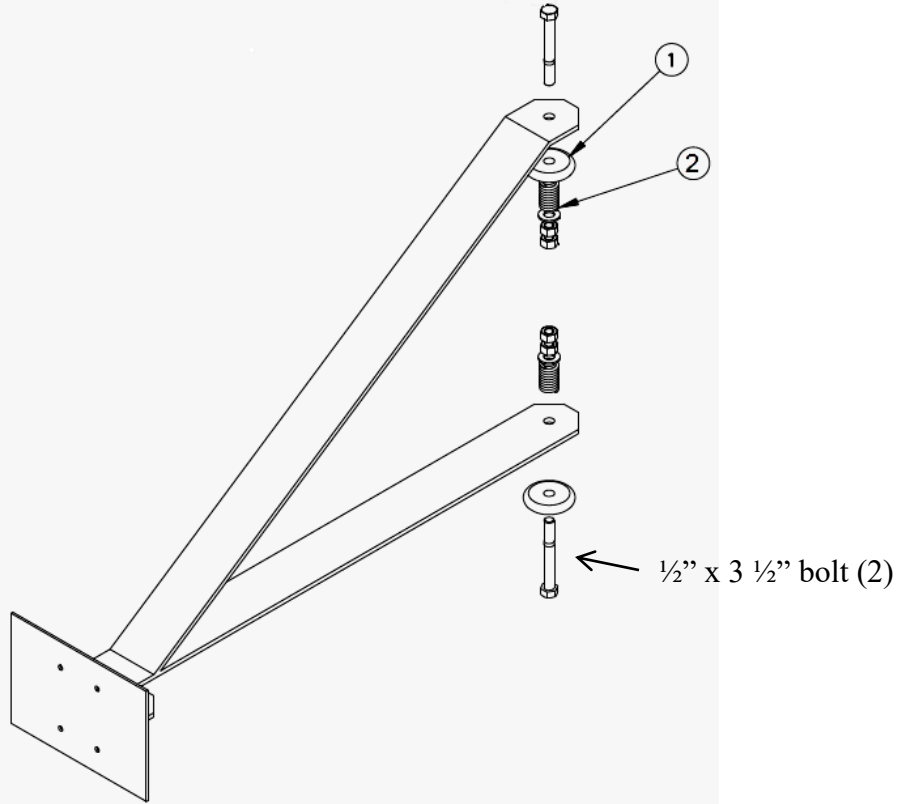
ITEM	PART NUMBER	DESCRIPTION
1	FA-020-ROUND	Bypass Valve
2	FA-277	Spring, Door Indicator
3	FA-356	Decal, Farm Aid Equipment, Inc. Mfg
4	FA-541-60	Cable, Indicator Bar for a 560, 60" Long
4	FA-541-63	Cable, Indicator Bar for a 680, 63" Long
5	FA-800	Pulley, Indicator Bar
6	FA-353-34	Door Indicator Bar, Model 560 & 680
7	FA-20-10	Hyd Cylinder, 2.00 Bore X 10.0 Stroke -- Repair Kit is FA639572
8	FA-20-24	Hyd Cylinder, 2.0 Bore X 24.0 Stroke -- Repair Kit is FA639572
9	FA-352P	Cylinder Pin
12	FA-355R	Decal, Fill Level
13	L-PTO OPP.	DECAL, PTO OPERATION
14	FA-541C	Cable Clamp
15	FAC-009A	PTO Drive Shield, Model 680/560
16	FAC-010	Shield Tie
17	FA604	Hitch Replacement --Wear Plate Only FA 603
	FAC-604CU	Adjustable hitch and mount UNPAINTED
18	FAC-006FA	Large Shield, Front, Model 560/680, Left or Right Hand
19	FAC-090L	Ladder, Model 560 & 680 (Specify Model)
20	FAC-130SIB	Assembly, 560 & 680 Scale Support
21	FAC-411B	Rubber Guard, PTO
22	FAC-604S	Jack

**EXTERNAL FRONT, MODELS 680 AND 560
RIGHT HAND DISCHARGE**



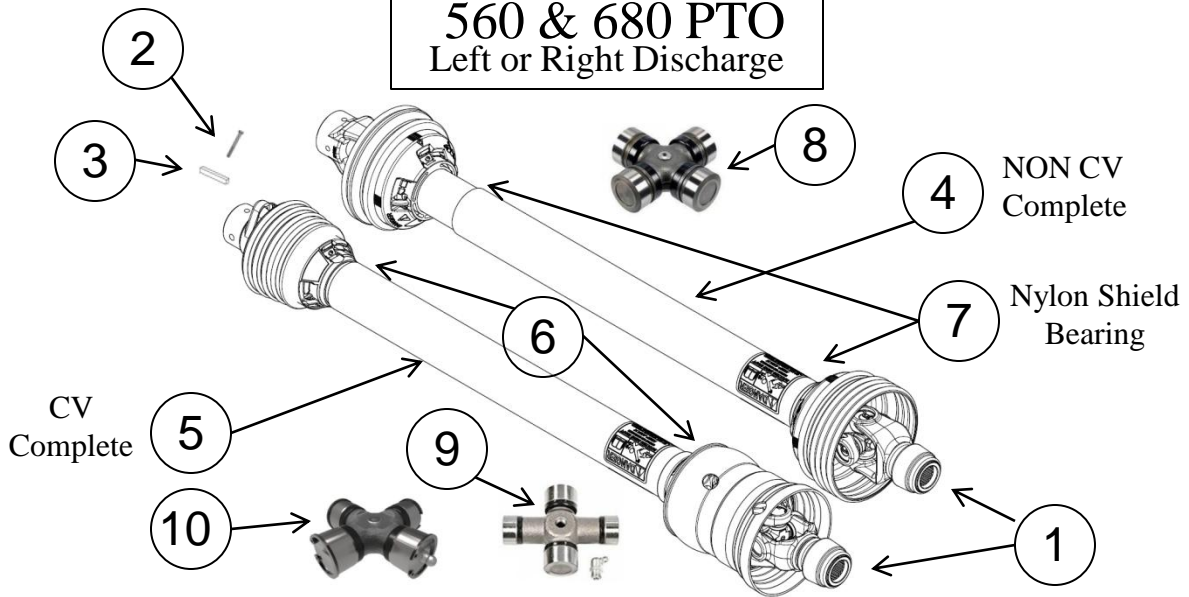
ITEM	PART NUMBER	DESCRIPTION
1	FA020-ROUND	Bypass Valve
2	FA277	Spring, Door Indicator
3	FA356	Decal, Farm Aid Equipment, Inc. Mfg
4	FA541-60	Cable, Indicator Bar for a 560, 60" Long
4	FA541-63	Cable, Indicator Bar for a 680, 63" Long
5	FA800	Pulley, Indicator Bar
6	FA353-34	Door Indicator Bar, Model 560 & 680
7	FA20-10	Hyd Cylinder, 2.00 Bore X 10.0 Stroke -- Repair Kit is FA639572
8	FA20-24	Hyd Cylinder, 2.0 Bore X 24.0 Stroke -- Repair Kit is FA639572
9	FA352P	Cylinder Pin
12	FA355R	Decal, Fill Level
13	L-PTO OPP.	DECAL, PTO OPERATION
14	FA541C	Cable Clamp
15	FAC009A	PTO Drive Shield, Model 680/560
16	FAC010	Shield Tie
17	FA604	Hitch Replacement --Wear Plate Only FA 603
	FAC604CU	Adjustable hitch and mount UNPAINTED
18	FAC006FA	Large Shield, Front, Model 560/680, Left or Right Hand
19	FAC090L	Ladder, Model 560 & 680 (Specify Model)
20	FAC130SIB	Assembly, 560 & 680 Scale Support
21	FAC411B	Rubber Guard, PTO
22	FAC604S	Jack

**ASSEMBLY, 560 & 680 SCALE and SUPPORT
RIGHT AND LEFT DISCHARGE**



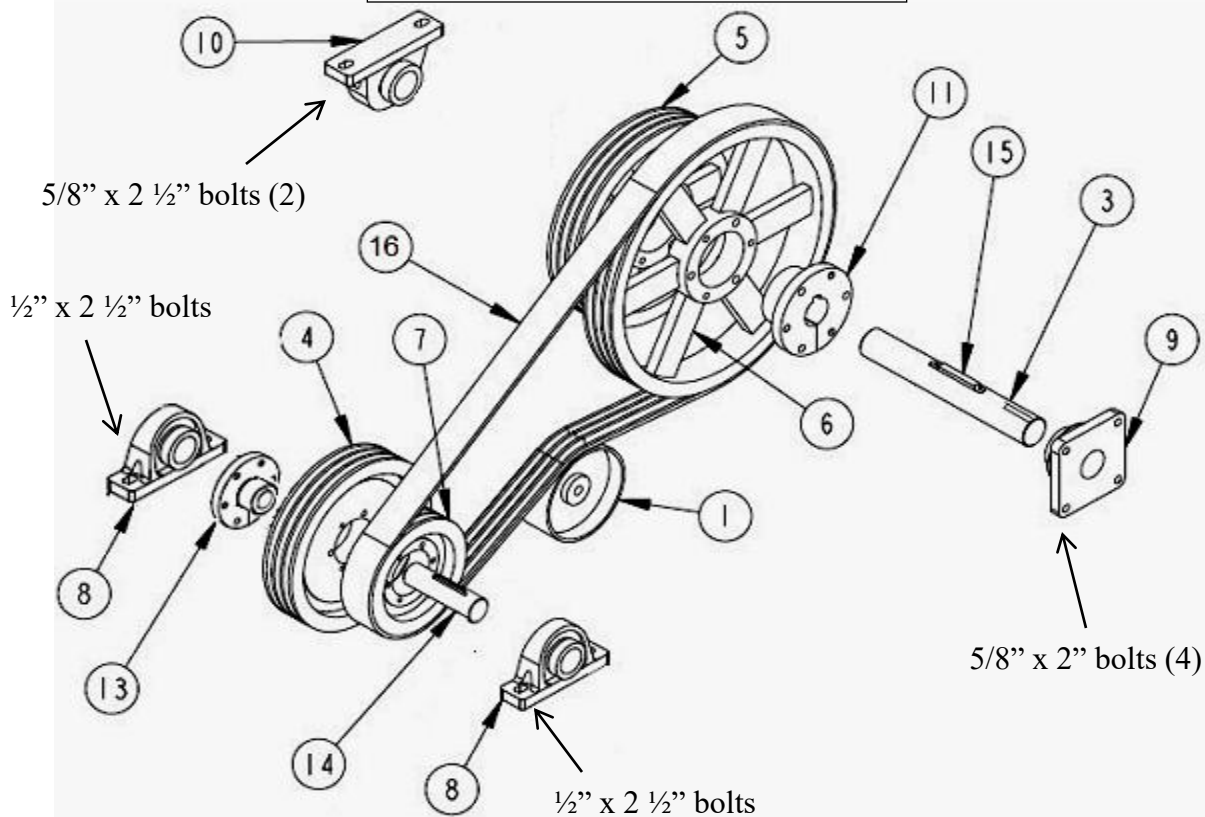
ITEM	PART NUMBER	DESCRIPTION
1	FA-135	Shock Absorber
2	FA-131S	Compression Spring
	SWT17807-0108	Rubber Mounts for Weigh-Tronix scales
	SWT12339-0015	Scale taper Bracket for Weigh-Tronix
	SWT21594-0370	2.50" Weigh-Tronix Weigh Bar
	SWT19219-0015	Summing Box Assy {Weigh Tronix J Box }
	SWT19266-0041	Power Cable, 12' Weigh-Tronix
	SWT23581-0017	5 pin pig tale for Weigh-Tronix bar
	SDS403335	Power cord – Digi-Star
	SDS404930	Junction box – Digi-Star-Lever
	SDS141837	cable - 30' J box
	SDS146110	2.50" Digi-Star Weigh Bar (30' cable)

560 & 680 PTO
Left or Right Discharge



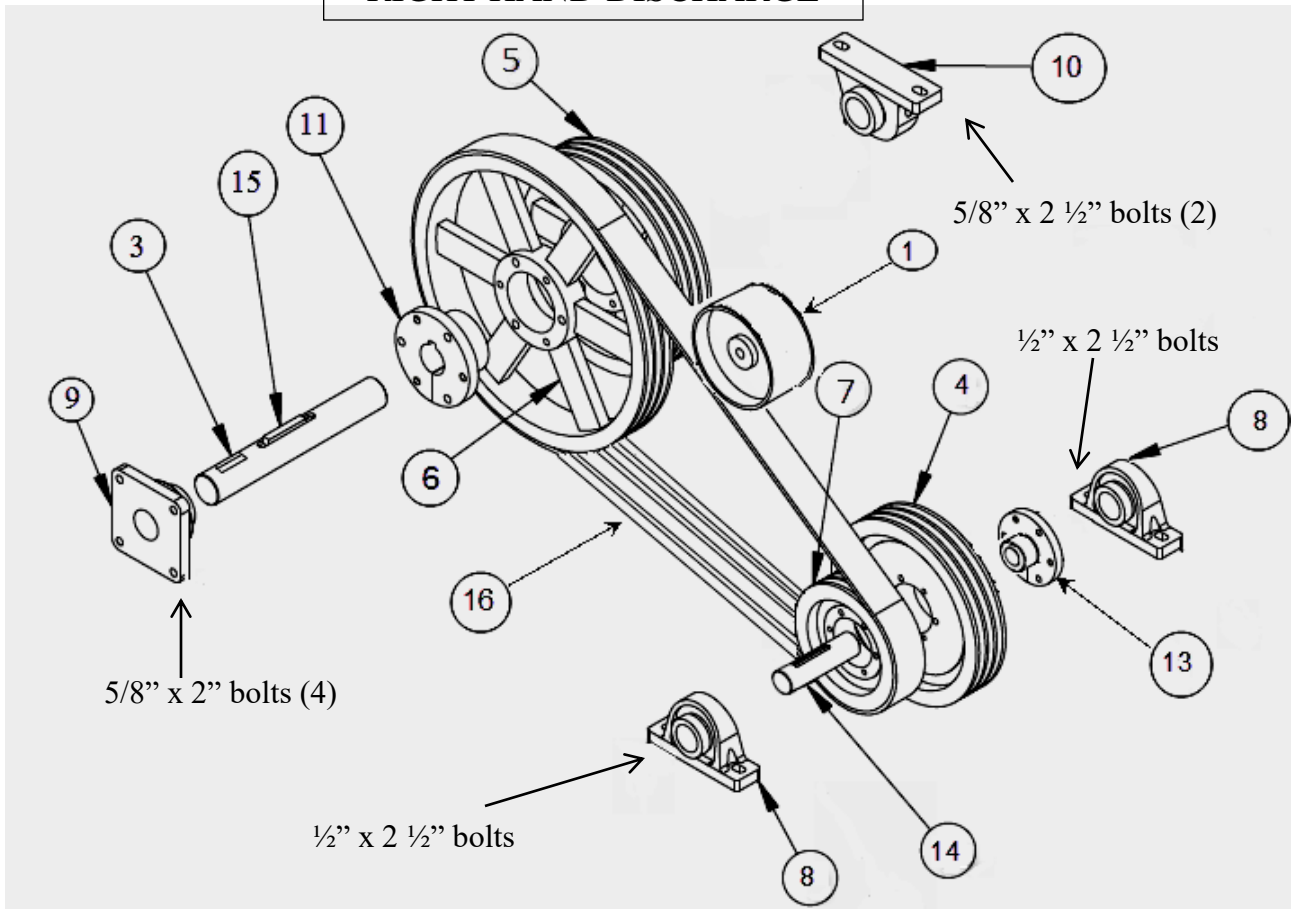
1	FA417W	PTO snap ball yoke repair kit-ALL
2	FAC412BOLT	3/8 X 3.5 grade 8 bolt with w/ shake proof nut
3	FAC412KEY	Key
NON CV PTOS		
4	FAC413-21	Complete PTO Shaft, 1000 RPM
4	FAC413-06	Complete PTO Shaft, 540 RPM
4	FA406	Complete PTO Shield with bearing (Not CV)
7	FAC413BK	PTO Shield Nylon Bearing
8	FAC411-35	Cross and Bearing Kit Fits both ends
CV PTOS WITH GREASE ZERKS IN THE CENTER OF THE CROSS		
5	FAC412-06	Complete CV PTO Shaft, 540 RPM (SPECIAL ORDER)
5	FAC408C	Complete CV PTO Shield with Bearing
6	FAC412BK	PTO Shield Nylon Bearing
8	FAC411-35	Cross and Bearing Kit for mixer end
9	FAC411CV-35	Cross and Bearing Kit for tractor end
CV PTOS WITH GREASE ZERKS IN THE BEARING CAP, "X LUBE"		
5	FAC412-21-SB	Complete CV PTO Shaft, 1000 RPM
5	FAC412-21-SB-1.75	Complete CV PTO 1000RPM 1.75" Shaft
5	FAC412SHIELD	Complete CV PTO Shield with Bearing.
9	FAC411 CV CAT3	Cross and Bearing Kit for mixer end
10	FAC411-CAT3CV	Cross and Bearing Kit for tractor end

**ASSY, 560 & 680 BELT DRIVE
LEFT HAND DISCHARGE**



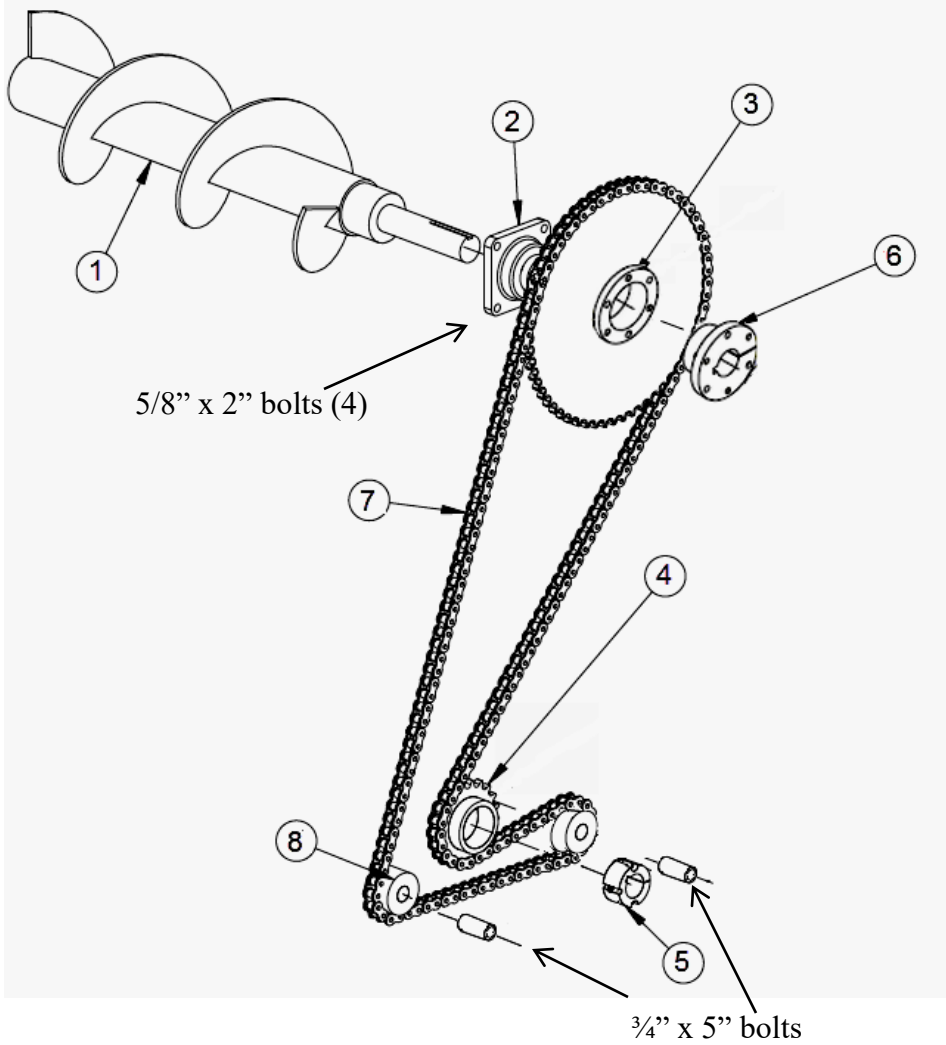
ITEM	PART NUMBER	DESCRIPTION
1	FAC-225	S25252A Idler Pulley
3	FAC-403	Shaft, 1-15/16 Dia X 13-3/4
4	FAC-3511	Pulley, 3G5V 11.8 Dia., 540 RPM
5	FAC-3514	Pulley, 3G5V 14.0 Dia., 540 RPM
6	FAC-3518	Pulley, 3G5V 18.7 Dia., 1000 RPM
7	FAC-3580	Pulley, 3G5V 8.0 Dia., 1000 RPM
8	FAC-105PB	Pillow Block BRG, 1-3/4 W/Lock Collar
9	FAC-106FB-4	Flange BRG, 4 Bolt, 1-15/16 W/Lock Collar
10	FAC-106PB	Pillow Block Brg, 1-15/16 W/Lock Collar
11	FAC-215E	E Bushing, 1-15/16
13	FAC-313H	QD-SF Bushing, 1-3/4
14	FAC-449	Shaft, 1-3/4 X 12
15	FAC-401K	Sq. Key, 1/2 X 3
16	FAC-5-1000	V-Belt, 3-5V
	FAC-226	Belt Idler Support
		Belt Idler Support shaft (8" X 0.75")
	FA412U	U-Bolt

ASSY, 560 & 680 BELT DRIVE
RIGHT HAND DISCHARGE



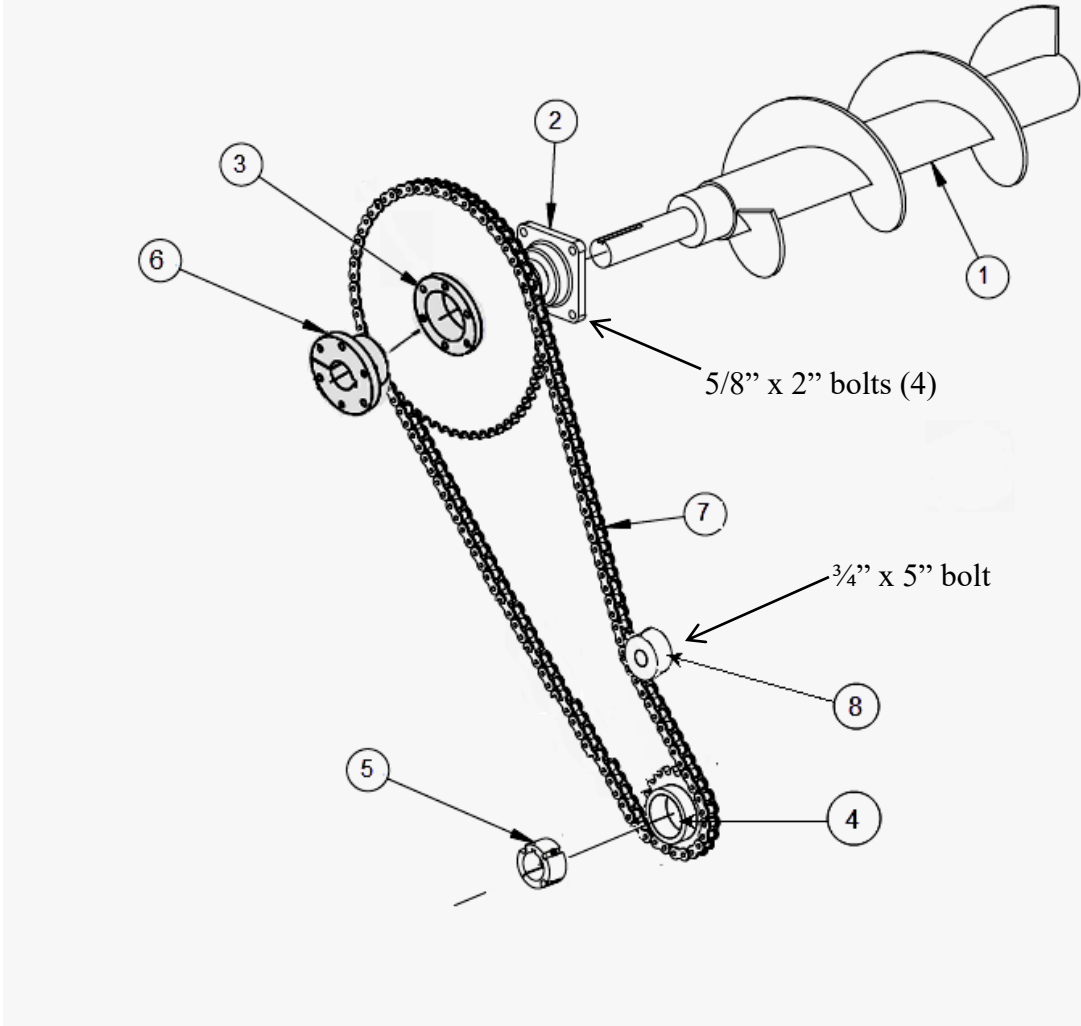
ITEM	PART NUMBER	DESCRIPTION
1	FAC-225	S25252A Idler Pulley
3	FAC-403	Shaft, 1-15/16 Dia X 13-3/4
4	FAC-3511	Pulley, 3G5V 11.8 Dia., 540 RPM
5	FAC-3514	Pulley, 3G5V 14.0 Dia., 540 RPM
6	FAC-3518	Pulley, 3G5V 18.7 Dia., 1000 RPM
7	FAC-3580	Pulley, 3G5V 8.0 Dia., 1000 RPM
8	FAC-105PB	Pillow Block BRG, 1-3/4 W/Lock Collar
9	FAC-106FB-4	Flange BRG, 4 Bolt, 1-15/16 W/Lock Collar
10	FAC-106PB	Pillow Block Brg, 1-15/16 W/Lock Collar
11	FAC-215E	E Bushing, 1-15/16
13	FAC-313H	QD-SF Bushing, 1-3/4
14	FAC-449	Shaft, 1-3/4 X 12
15	FAC-401K	Sq. Key, 1/2 X 3
16	FAC-5-1000	V-Belt, 3-5V
	FAC-226	Belt Idler Support
		Belt Idler Support shaft (8" X 0.75")
	FA412U	U-Bolt

ASSY, 560 & 680 FRONT AUGER DRIVE
LEFT HAND DISCHARGE



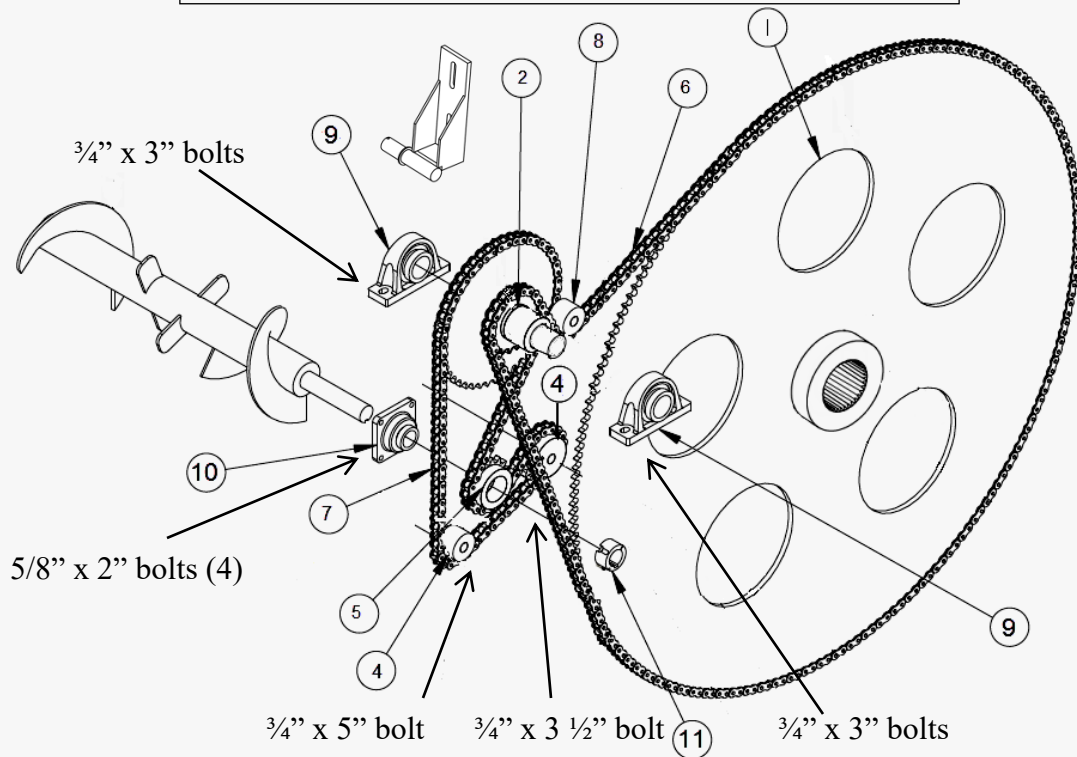
ITEM	PART NUMBER	DESCRIPTION
1	FAC-818	Auger, 560 & 680, Left or Right Hand
1	FAC-813L	Left Hand Flighting, 12 used
1	FAC-813R	Right Hand Flighting 1 used
2	FAC-108FB-4	Flange Brg, 4 Bolt, 2-3/16
3	FA-208	Sprocket, 48T-80, QD
4	FAC-230_	Sprocket, 16T-80, Taper Lock
5	FAC-234H_	2012 Taper Lock Bushing, 1-15/16
6	FA-208B	QD-E Hub 2-3/16 bore
7	FAC-283-157L	80 Chain, Front Drive Both 560 and 680, 146 Rollers
8	FAC-513	Poly Chain Idler

**ASSY, 560 & 680 FRONT AUGER DRIVE
RIGHT HAND DISCHARGE**



ITEM	PART NUMBER	DESCRIPTION
1	FAC-818	Auger, 560 & 680, Left or Right Hand
1	FAC-813R	Sectional Flighting, 12 used
1	FAC813L	Sectional Flighting, 1 used
2	FAC-108FB-4	Flange Brg, 4 Bolt, 2-3/16
3	FA-208	Sprocket, 48T-80, QD
4	FAC-230_	Sprocket, 16T-80, Taper Lock
5	FAC-234H_	2012 Taper Lock Bushing, 1-15/16
6	FA-208B	QD-E Hub, 2-3/16 bore
7	FAC-283-157R	80 Chain, Front Drive for 560, 110 Rollers
7	FAC-283-680R	80 Chain, Front Drive for 680, 124 Rollers
8	FAC-513	Poly Chain Idler, Front W/Bushing

**ASSY, 680 REAR DRIVE
LEFT HAND DISCHARGE SHOWN
RIGHT HAND WOULD BE MIRROR IMAGE**

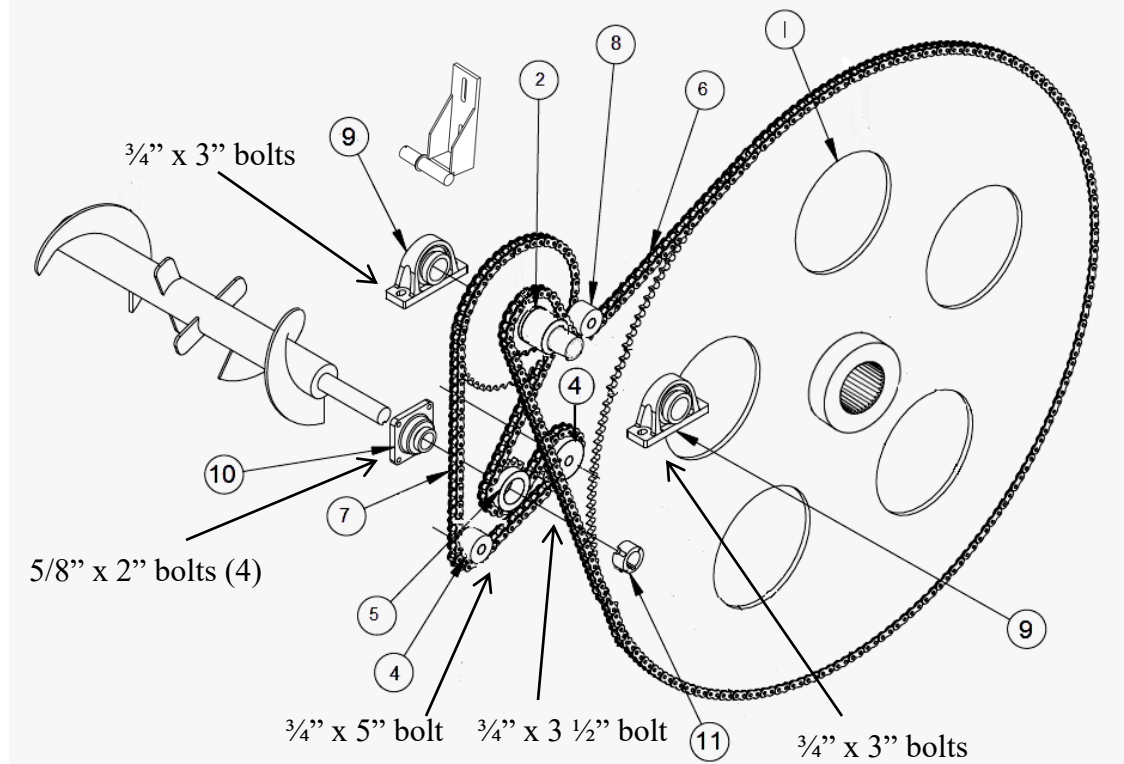


ITEM	PART NUMBER	DESCRIPTION
1	FAC-174 SPLINE	Sprocket, 174T-120 SPLINE
2	FAC-148	Sprocket Weldment, 48T & 16T
	SNAP RING 4.5	4.5" Snap Ring
4	FAC-513	Poly Roller
5	FAC-235	Sprocket, 16T-100, Taper Lock
6	FAC-284-289	120 Chain, Rear Final Drive, 192 Rollers
7	FAC-282-134	100 Chain, Rear Initial Drive, 108 Rollers
8	FAC-347	Poly Idler Pulley, Rear
9	FA-104PB-SS	Pillow Block, 2-15/16 W/Bearing , Set Screw
10	FAC-108FB-4	Flange Brg, 4 Bolt, 2-3/16
11	FAC-245H	2517 Taper Lock Bushing, 2-3/16
	FAC347 SUPPORT	Final Drive Chain Slack Adjuster

LEFT HAND DISCHARGE IS ILLUSTRATED. A RIGHT HAND DISCHARGED WOULD BE A MIRROR OF THIS IMAGE.

SPECIFY LEFT OR RIGHT FOR FAC347 SUPPORT

ASSY, 560 REAR DRIVE
LEFT HAND DISCHARGE SHOWN
RIGHT HAND WOULD BE MIRROR IMAGE



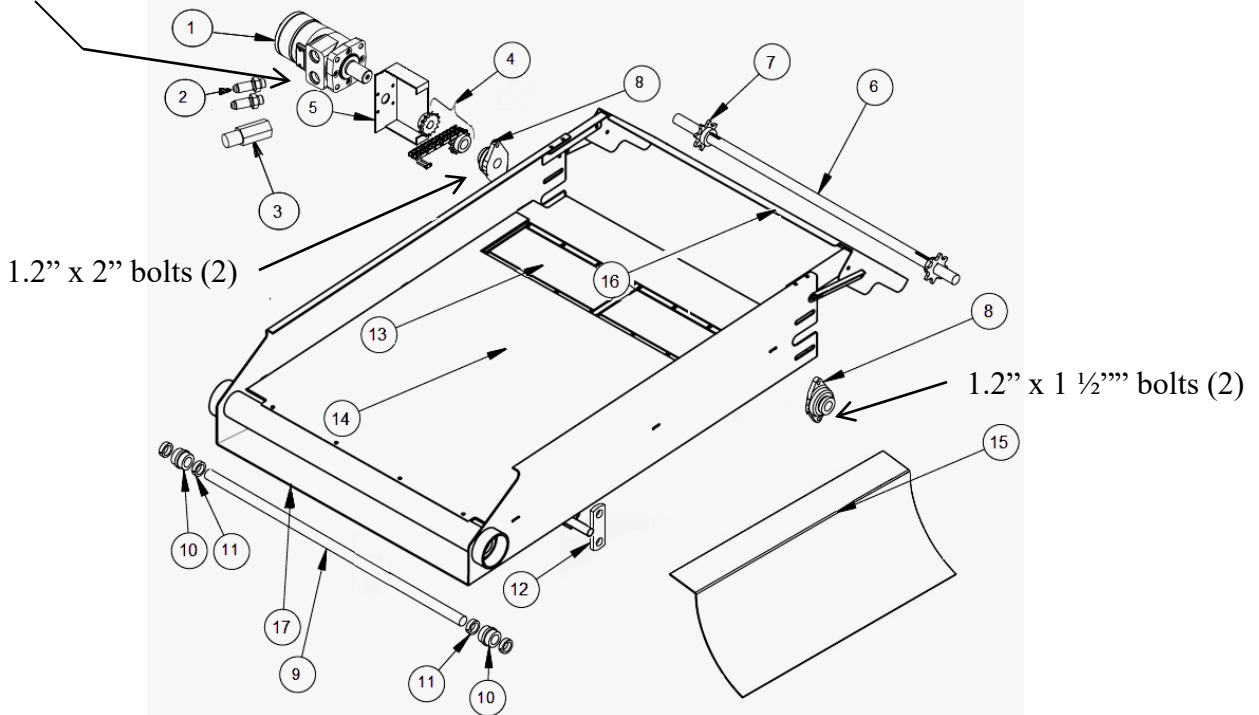
ITEM	PART NUMBER	DESCRIPTION
1	FAC-209 SPLINE	Sprocket, 209T-100 SPLINE
2	FAC-216	Sprocket Weldment, 48T & 20T
	SNAP RING 4.5	4.5" Snap Ring
4	FAC-513	Poly Roller
5	FAC-235	Sprocket, 16T-100, Taper Lock
6	FAC-281-289	100 Chain, Rear Final Drive, 232 Rollers
7	FAC-282-127	100 Chain, Rear Initial Drive, 102 Rollers
8	FAC-347	Poly Idler Pulley, Rear
9	FA-104PB-SS	Pillow Block, 2-15/16 W/Bearing , Set Screw
10	FAC-108FB-4	Flange Brg, 4 Bolt, 2-3/16
11	FAC-245H	2517 Taper Lock Bushing, 2-3/16
	FAC347 SUPPORT	Final Drive Chain Slack Adjuster

LEFT HAND DISCHARGE IS ILLUSTRATED. A RIGHT HAND DISCHARGED WOULD BE A MIRROR OF THIS IMAGE.

SPECIFY LEFT OR RIGHT FOR FAC347 SUPPORT

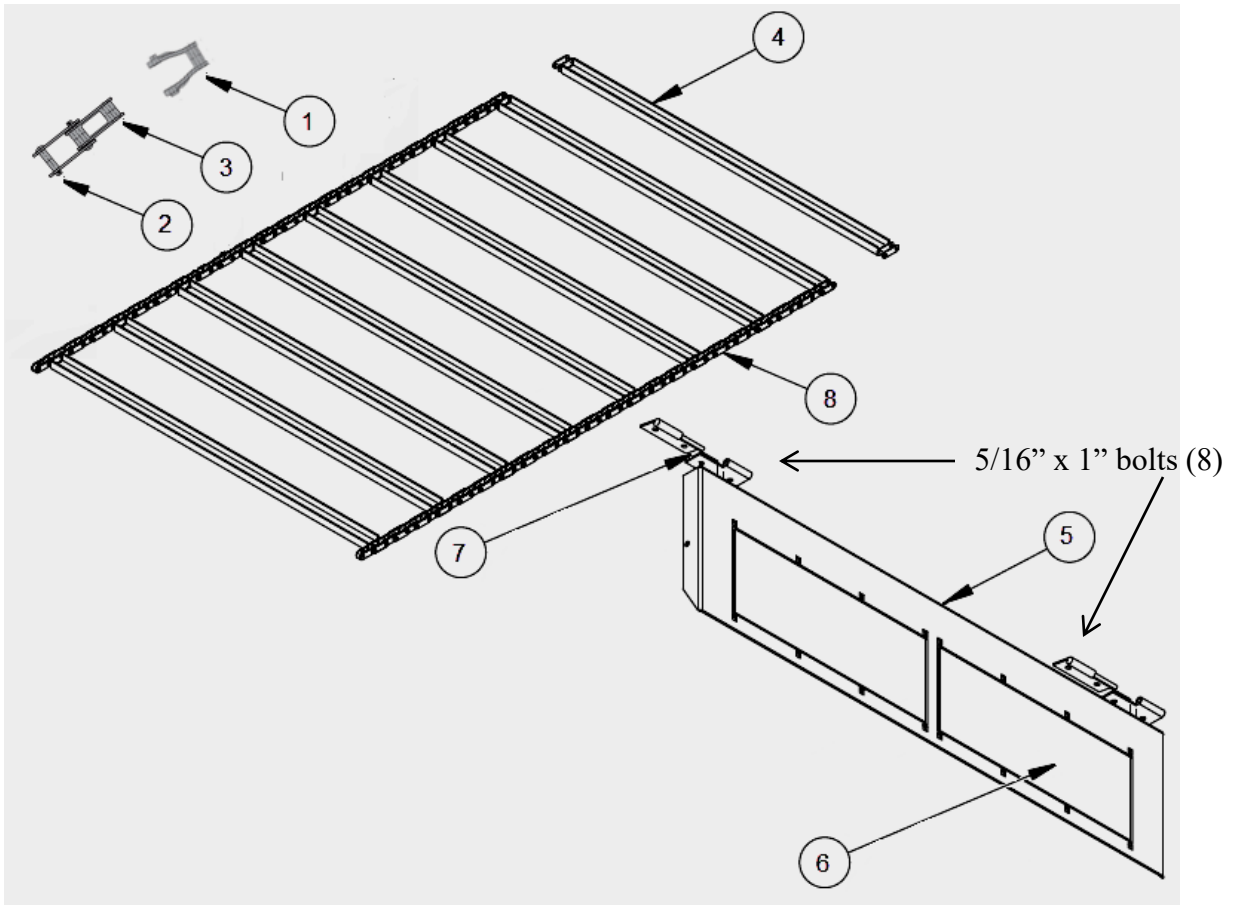
ASSY, 560 & 680 ELEVATOR Right and Left Hand Discharge

3/8" x 1" bolts with a flat and lock washer



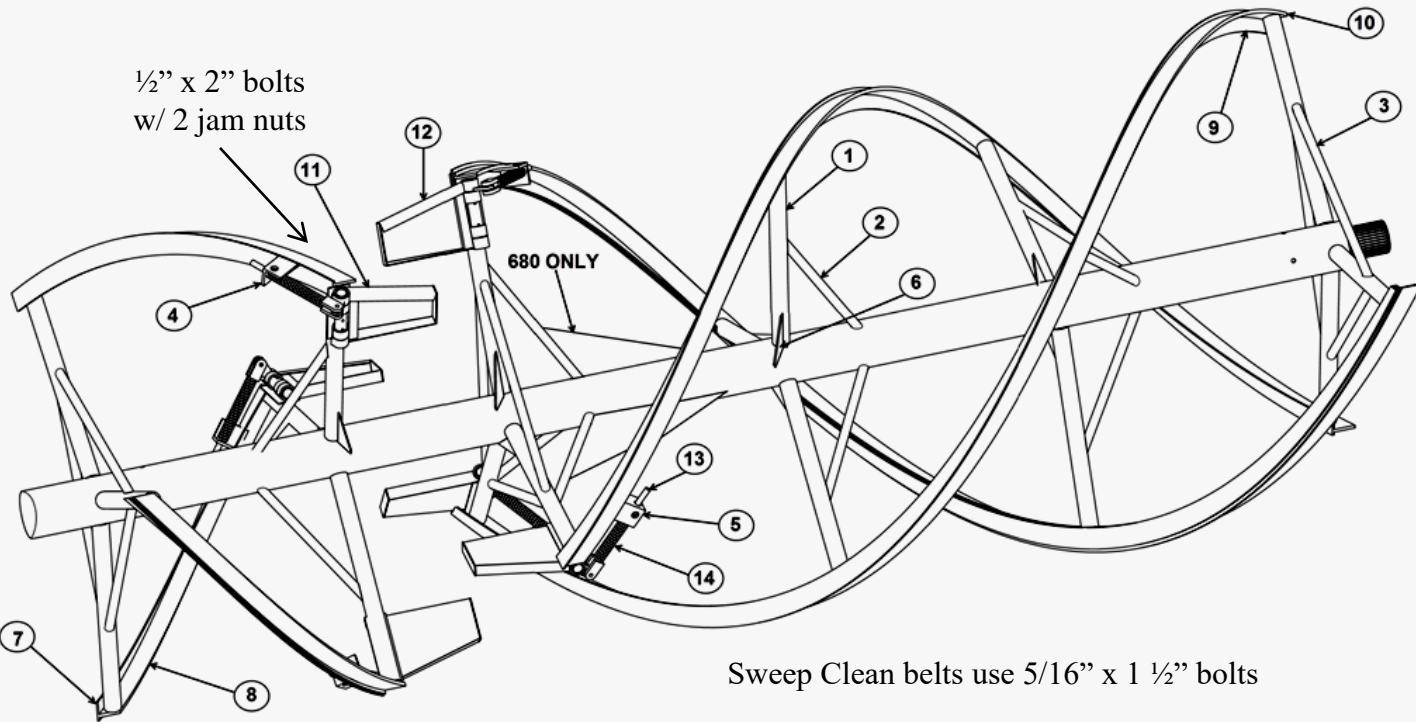
ITEM	PART NUMBER	DESCRIPTION
1	FAC-509	Hydraulic Motor (Seal Kit FAC60540)
2	SAE10 TO JIS#6	#10 Male SAE to #6 Male JIC (Motor Hose Fitting)
3	FAC568	Check Valve (between hose and Pioneer Tips)
4	FAC529	Hydraulic Drive Kit (Sprockets, Chain, and Link)
	FAC529#50C	#50 Double Chain and Connector only
5	FAC-518	Mount, Hydraulic Motor
6	FAC-511	Shaft, 1-1/4 X 46
7	FAC-555	Conveyor Sprocket, 755 X 1-1/4 Bore
8	FA-101FB-2	Flange Bearing, 2-Bolt, 1-1/4 Bore W/Locking Collar
9	FAC-512	Driven Shaft, 1-1/4 X 42
10	FAC-513	Elevator Idler Roll
11	FAC-514	Set Collar, 1-1/4
12	FAC-520	Connector Link, Cylinder
13	FAC748FLOOR MAG	Magnet (two required) (Started Fall 2018)
14	FAC517-5 POLY	Poly floor(Started Fall 2018)
15	FAC536ES	Elevator Saddle
16	FAC520EH	Elevator Hood with Brackets
16	FAC520HOOD	Elevator Hood Only
Not Shown	FAC350S	Unloading Door
If a Magnet is Requested Please Add an "/M" Suffix		
17	FAC-500-4	Elevator Weldment, 4 Ft. Includes Rollers and Shaft
	FAC-500-5	Elevator Weldment, 5 Ft. Includes Rollers and Shaft
	FAC-517-4	4' Elevator Complete, Less Motor and Mount
	FAC-517-5	5' Elevator Complete, Less Motor and Mount

560 & 680 ELEVATOR CHAIN AND OPTIONS
LEFT AND RIGHT HAND DISCHARGE



ITEM	PART NUMBER	DESCRIPTION
1	FAC515OS	Offset Connector (1/2 Link)
2	FAC515C	Connector
3	FAC510L	Link, Cast
4	FAC-515	Chain Slat With Links
5	FAC748	Break-Away Magnet Assembly With All Hardware
6	FAC748FLOOR MAG	Magnet (two required)
7	HINGE, MAGNET- Left Hand	Hinge For Breakaway Magnet, Left Hand Discharge. 2 Needed Shown above
	HINGE, MAGNET- Right Hand	Hinge For Breakaway Magnet, Left Hand Discharge. 2 Needed
8	FAC-516-4	Elevator Chain, 4 Ft.
	FAC-516-5	Elevator Chain, 5 Ft.

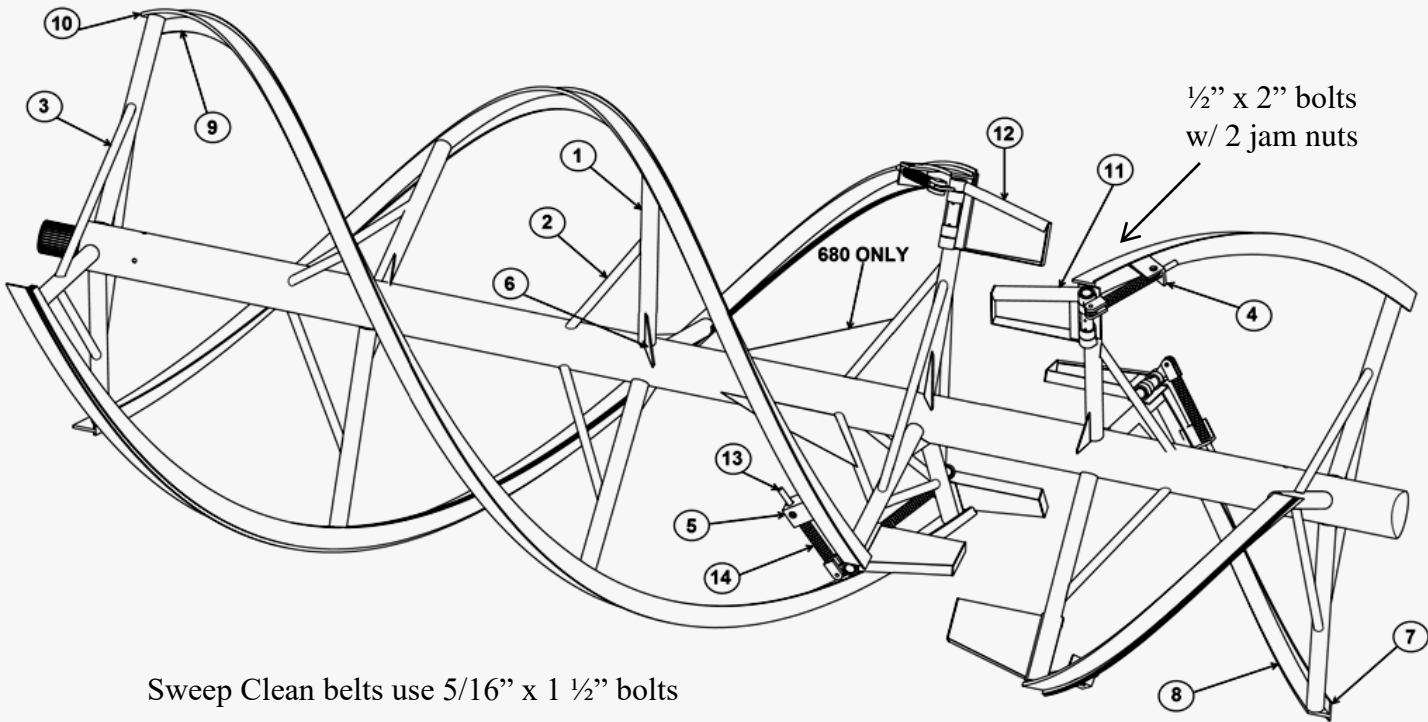
ASSY, 560 & 680 SPIRAL LEFT HAND DISCHARGE



Sweep Clean belts use 5/16" x 1 1/2" bolts

ITEM	PART NUMBER	DESCRIPTION
1	FAC-843	560 SPIRAL SPOKE 2 1/2"x 33", 18 per
1	FAC-844	680 SPIRAL SPOKE, 3"x 38, 18 per
2	FA-819	560 SPOKE BRACE PIPE 1 1/4" x 27", 15 per
2	FAC-844BP	680 SPOKE BRACE PIPE 2" x 32.5, 15 per
3	FAC-819-560	560 SPIRAL SUPPORT, 1 1/4" X 37", 9 per"
3	FAC-819-680	680 SPIRAL SUPPORT, 1 1/4" X 41, 9 per"
4	FAC-333SRG-LONG	FRONT SPRING ROD GUIDE. 3 per
5	FAC-333SRG-SHORT	REAR SPRING ROD GUIDE, 3 per
6	FA-817	SPIRAL GUSSET , 15 per
7	FAC-705-FF-H	FRONT SPIRAL FACE WITH HOLES 680, 2 of 6' 8"
7	FAC-705-FF	FRONT SPIRAL FACE WITH OUT HOLES 680, 2 of 6' 8"
7	FAC-704-FF-H	FRONT SPIRAL FACE WITH HOLES 560, 2 of 6' 8"
7	FAC-704-FF	FRONT SPIRAL FACE WITHOUT HOLES 560, 2 of 6' 8"
8	FAC-705-FS	FRONT SPIRAL SUPPORT 680, 6 of 6' 8"
8	FAC-704-FS	FRONT SPIRAL SUPPORT 560, 6 of 6' 8"
9	FAC-705-BF-H	REAR SPIRAL FACE WITH HOLES 680, 2 of 20'
9	FAC-705-BF	REAR SPIRAL FACE WITHOUT HOLES 680, 2 of 20', 6 of 3', 3 of 18"
9	FAC-704-BF-H	REAR SPIRAL FACE WITH HOLES 560, 2 of 20'
9	FAC-704-BF	REAR SPIRAL FACE WITHOUT HOLES 560, 2 of 20', 6 of 3', 3 of 18"
10	FAC-705-BS	REAR SPIRAL SUPPORT 680, 6 of 20'
10	FAC-704-BS	REAR SPIRAL SUPPORT 560, 6 of 20'
---	FAC-706	SWEEP BELT 560 AND 680, uses up to (26) 5/16 X 1.5" bolts
11	FAC-333F	FRONT KICKER WITH PIVOT TUBE AND HARDWARE, 3 per
12	FAC-333R	REAR KICKER WITH PIVOT TUBE AND HARDWARE, 3 per
13	FA335SR	KICKER SPRING ROD, 6 per
14	FAC-332 REV2	COMPRESSION SPRING, 3 per

**ASSY, 560 & 680 SPIRAL
RIGHT HAND DISCHARGE**

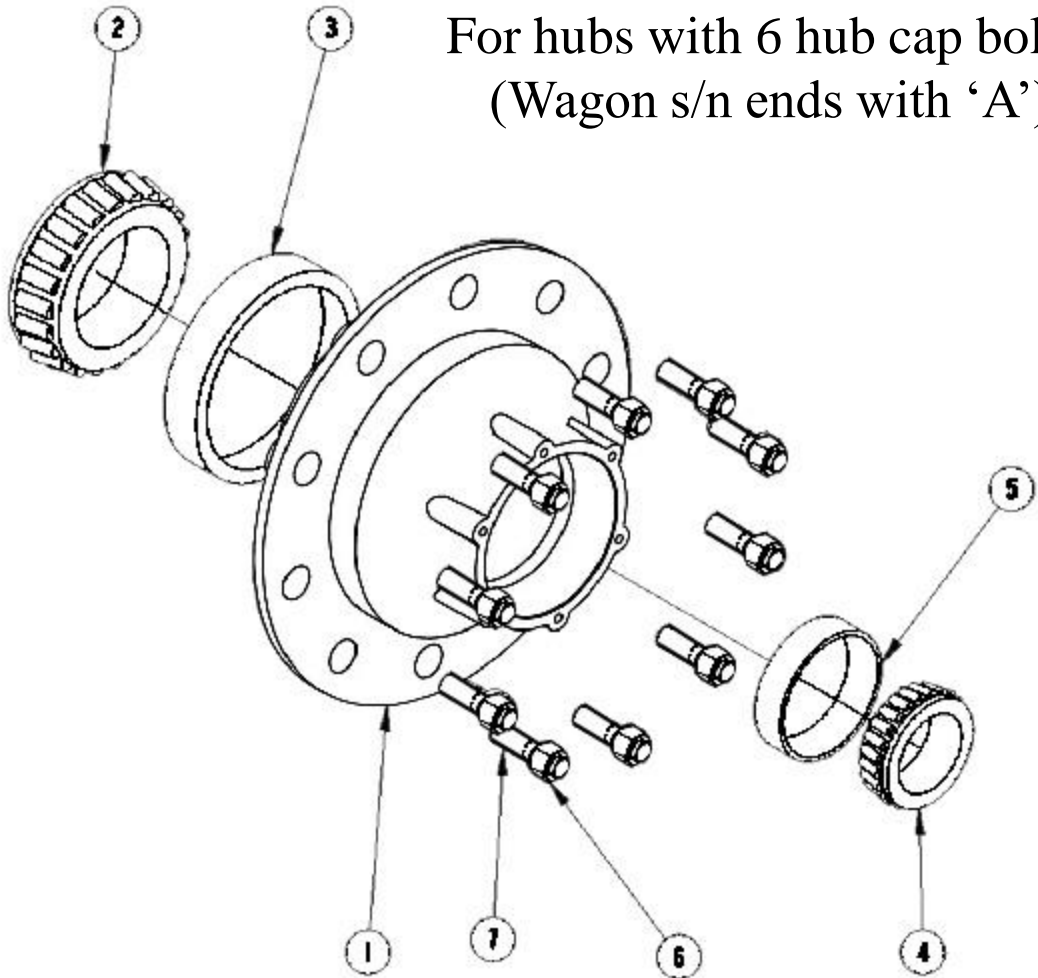


Sweep Clean belts use 5/16" x 1 1/2" bolts

ITEM	PART NUMBER	DESCRIPTION
1	FAC-843	560 SPIRAL SPOKE 2 1/2"x 33", 18 per
1	FAC-844	680 SPIRAL SPOKE, 3"x 38, 18 per
2	FA-819	560 SPOKE BRACE PIPE 1 1/4" x 27", 15 per
2	FAC-844BP	680 SPOKE BRACE PIPE 2" x 32.5, 15 per
3	FAC-819-560	560 SPIRAL SUPPORT, 1 1/4" X 37", 9 per
3	FAC-819-680	680 SPIRAL SUPPORT, 1 1/4" X 41, 9 per"
4	FAC-333SRG-LONG	FRONT SPRING ROD GUIDE. 3 per
5	FAC-333SRG-SHORT	REAR SPRING ROD GUIDE, 3 per
6	FA-817	SPIRAL GUSSET , 15 per
7	FAC-705-BF-H	FRONT SPIRAL FACE WITH HOLES 680, 2 of 6' 8"
7	FAC-705-BF	FRONT SPIRAL FACE WITH OUT HOLES 680, 2 of 6' 8"
7	FAC-704-BF-H	FRONT SPIRAL FACE WITH HOLES 560, 2 of 6' 8"
7	FAC-704-BF	FRONT SPIRAL FACE WITHOUT HOLES 560, 2 of 6' 8"
8	FAC-705-BS	FRONT SPIRAL SUPPORT 680, 6 of 6' 8"
8	FAC-704-BS	FRONT SPIRAL SUPPORT 560, 6 of 6' 8"
9	FAC-705-FF-H	REAR SPIRAL FACE WITH HOLES 680, 2 of 20'
9	FAC-705-FF	REAR SPIRAL FACE WITHOUT HOLES 680, 2 of 20', 6 of 3', 3 of 18"
9	FAC-704-FF-H	REAR SPIRAL FACE WITH HOLES 560, 2 of 20'
9	FAC-704-FF	REAR SPIRAL FACE WITHOUT HOLES 560, 2 of 20', 6 of 3', 3 of 18"
10	FAC-705-FS	REAR SPIRAL SUPPORT 680, 6 of 20'
10	FAC-704-FS	REAR SPIRAL SUPPORT 560, 6 of 20'
---	FAC-706	SWEEP BELT 560 AND 680, uses up to (26) 5/16 X 1.5" bolts
11	FAC-333R	FRONT KICKER WITH PIVOT TUBE AND HARDWARE, 3 per
12	FAC-333F	REAR KICKER WITH PIVOT TUBE AND HARDWARE, 3 per
13	FA335SR	KICKER SPRING ROD, 6 per
14	FAC-332 REV2	COMPRESSION SPRING, 3 per

**HUB W/BEARINGS 560 & 680
RIGHT AND LEFT HAND DISCHARGE**

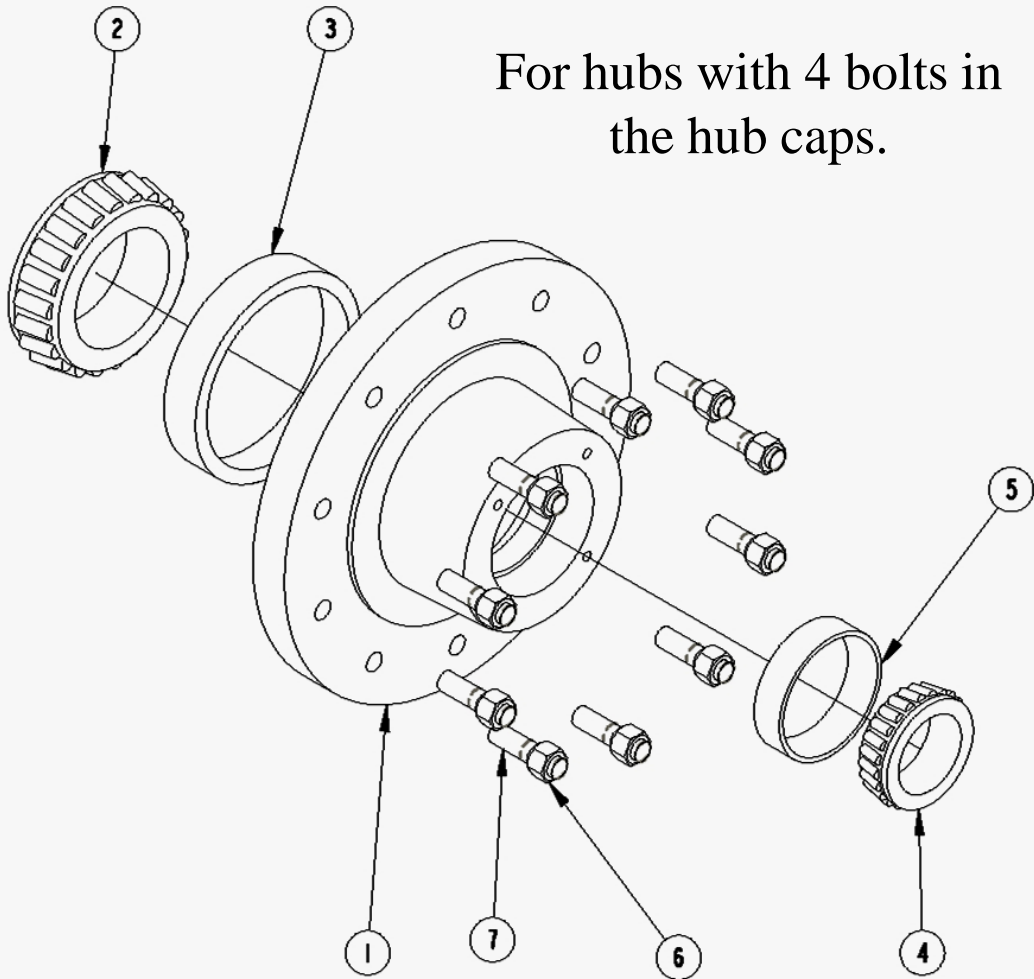
For hubs with 6 hub cap bolts.
(Wagon s/n ends with 'A')



ITEM	PART NUMBER	DESCRIPTION
1	FAC-633	680 Hub W/Races
2	FAC-633IB	Bearing, Inside (663)
3	FAC-633IR	Bearing Race, Inside (653)
4	FAC-633OB	Bearing, Outer (HM212049)
5	FAC-633OR	Bearing Race, Outer (HM212011)
6	FA621WN	Wheel Nut 430/560/680
7	FA622HB	Stud Bolt 430/560/680
	FAC-633CA	Complete Assy, 560 & 680 Hub W/Bearings

**HUB W/BEARINGS 560 & 680
RIGHT AND LEFT HAND DISCHARGE**

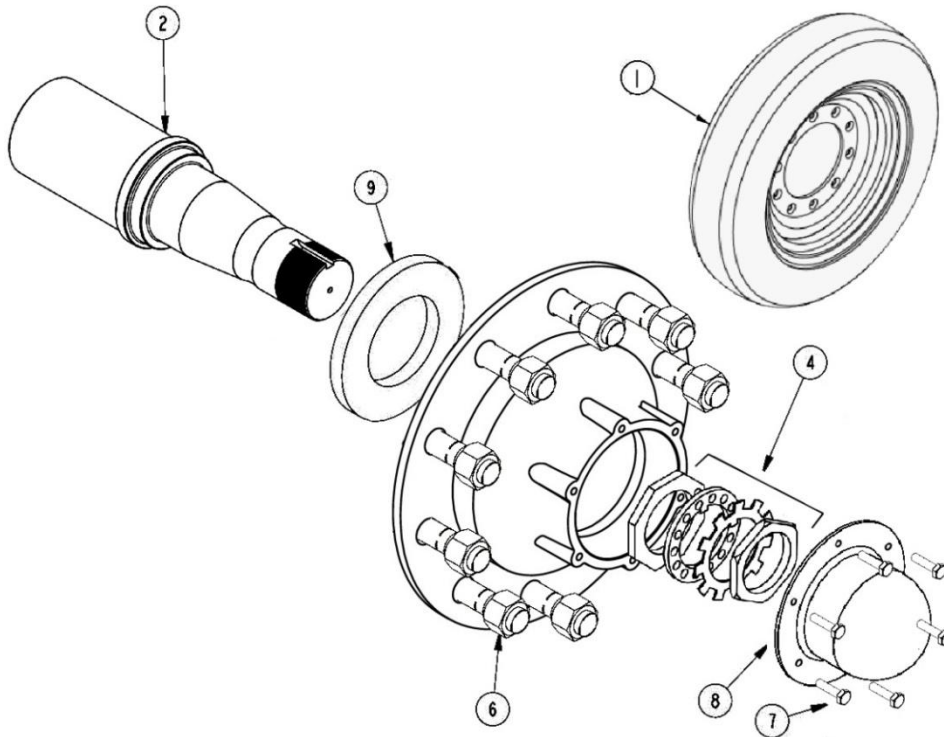
For hubs with 4 bolts in
the hub caps.



ITEM	PART NUMBER	DESCRIPTION
1	FAC-631	680 Hub W/Races
2	FAC-631IB	Bearing, Inside (47687)
3	FAC-631IR	Bearing Race, Inside (47620)
4	FAC-631OB	Bearing, Outer (39585)
5	FAC-631OR	Bearing Race, Outer (39520)
6	FA621WN	Wheel Nut 430/560/680
7	FA622HB	Stud Bolt 430/560/680

SPINDLE AND HUB 560 & 680
RIGHT AND LEFT AND DISCHARGE

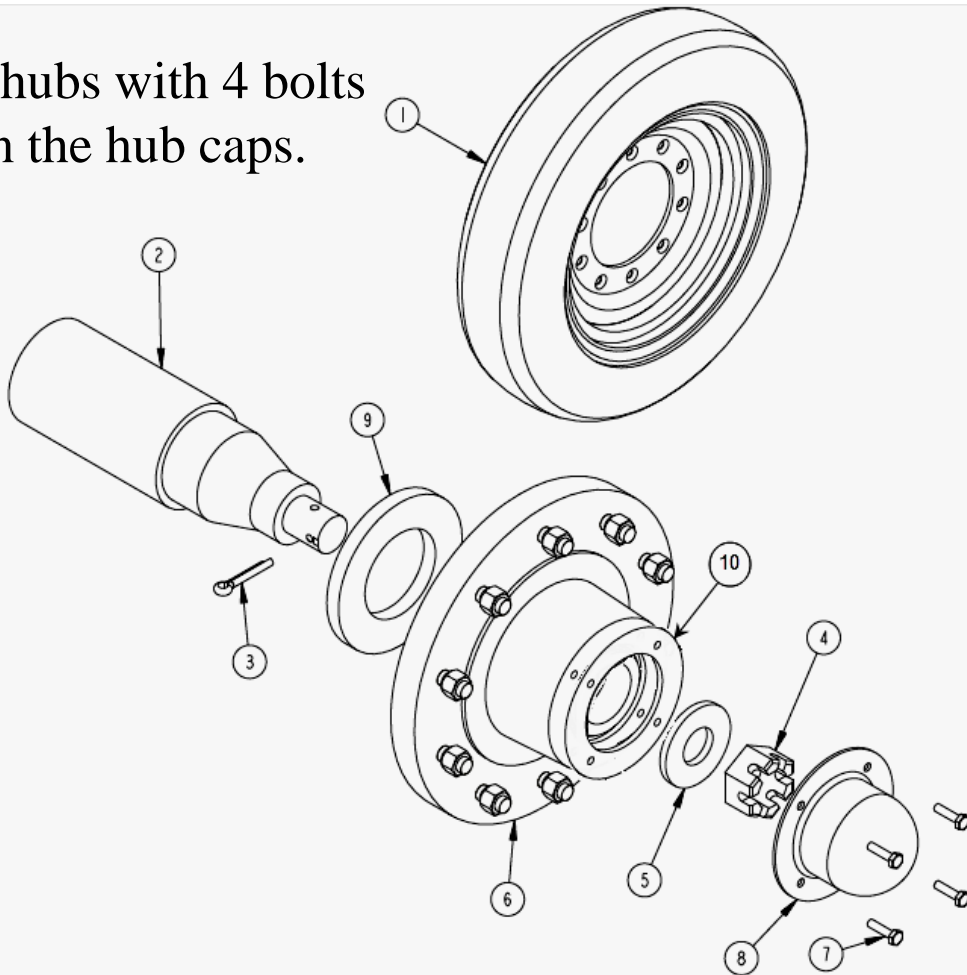
For hubs with 6 hub cap bolts.
(Wagon s/n ends with 'A')



ITEM	PART NUMBER	DESCRIPTION
1	FA-622WH	Wheel, 13.5 X 22.5 X 10
2	FAC-633	680 Spindle
4	FAC633N	Spindle nut parts
6	FAC-633CA	Assy, 560 & 680 Hub W/Bearings
7	FAC-631CB	Bolt, Hub Cap
8	FAC-633HC	Hub Cap
9	FAC-633S	Bearing Seal (40574SA)
10	FAC-633GAS	Gasket

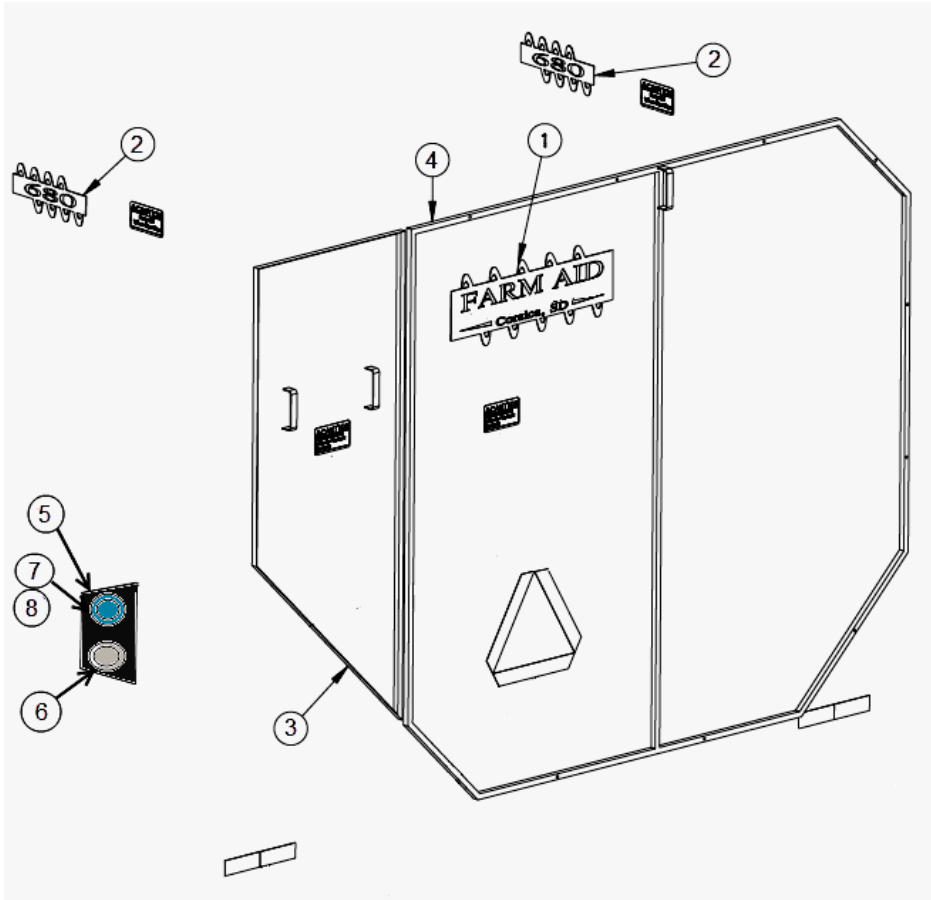
**SPINDLE AND HUB 560 & 680
RIGHT AND LEFT AND DISCHARGE**

For hubs with 4 bolts
in the hub caps.



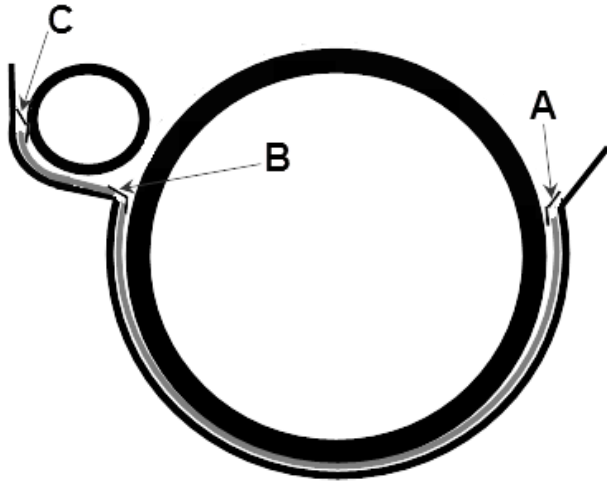
ITEM	PART NUMBER	DESCRIPTION
1	FA-622WH	Wheel, 13.5 X 22.5 X 10
2	FAC-630	680 Spindle
3	FAC-630RP	Roll Pin 3/8" x 2 3/4"
4	FAC-630SN	Spindle Nut, 1 3/4" 12 TPI
5	FAC-630W	Spindle Washer, 680
6	FAC-631CA	Assy, 560 & 680 Hub W/Bearings
7	FAC-631CB	Bolt, Hub Cap
8	FAC-631HC	Hub Cap
9	FAC-631S	Bearing Seal (38730)
10	FAC-631GAS	Gasket

EXTERNAL PARTS IN REAR, 560 & 680
RIGHT AND LEFT HAND DISCHARGE



ITEM	PART NUMBER	DESCRIPTION
1	FA-356	Decal, Farm Aid Equipment, Inc. Mfg
2	FA-360-560	Decal, 560
2	FA-360-680	Decal, 680
3	FAC-008A	Door Small Rear 560/680,Specify Left or Right Hand
4	FAC-006BA	Door Large Rear 560/680, Specify Left or Right
5	FA760L	Replacement Lamp Assy
6	FA760Amber	Replacement Amber Lens
7	FA760Red	Replacement Red Lens
8	FA760Black	Replacement Black Lens
	FA760B	Lamp Mounting Bracket
	FAC005A	Weather strip (door seal) per ft. – 25 ft required

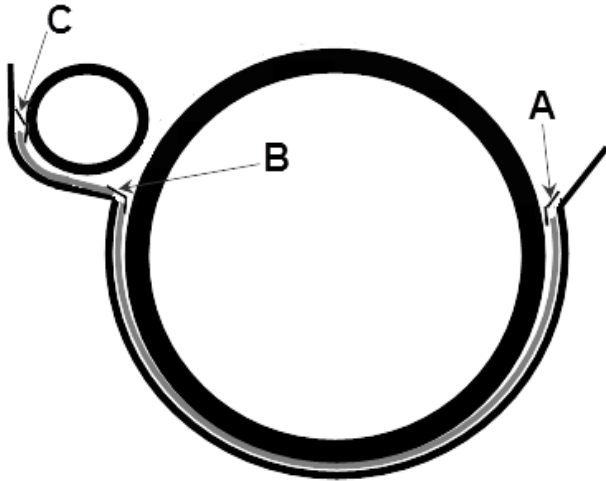
**POLY LINERS, 560 & 680
LEFT HAND DISCHARGE**



STRIP CHART			
	A	B	C
front	FA7510	FA7610	FA7710
middle	FA7520	FA7620	FA7520
back	FA7530	FA7630	FA7530

	P / N	DESCRIPTION
	FAC736KL	POLY FLOOR LINER KIT, MODEL 680
	FAC736APL	POLY AUGER LINER KIT, MODEL 680
	FAC736-1L	FRONT POLY SHEET, MODEL 680
	FAC736-2L	2nd POLY SHEET, MODEL 680
	FAC736-3L	3rd POLY SHEET, MODEL 680
	FAC736-4L	BACK POLY SHEET, MODEL 680
	FAC738KL	POLY FLOOR LINER KIT, MODEL 560
	FAC738APL	POLY AUGER LINER KIT, MODEL 560
	FAC738-1L	FRONT POLY SHEET, MODEL 560
	FAC738-2L	2nd POLY SHEET, MODEL 560
	FAC738-3L	3rd POLY SHEET, MODEL 560
	FAC738-4L	BACK POLY SHEET, MODEL 560
	FA757	CARRIAGE BOLT (560-Qt 39; 680-Qt 39 Auger 23)
	FA756B	ELEVATOR BOLT (560-Qt 57; 680-Qt 64 Auger 7)
	FA755	5/16" TORX SCREW (560-Qt 31; 680-Qt 31 Auger 30)

**POLY LINERS, 560 & 680
RIGHT HAND DISCHARGE**



STRIP CHART			
	A	B	C
front	FA7510	FA7610	FA7710
middle	FA7520	FA7620	FA7520
back	FA7530	FA7630	FA7530

	P / N	DESCRIPTION
	FAC736KR	POLY FLOOR LINER KIT, MODEL 680
	FAC736APR	POLY AUGER LINER KIT, MODEL 680
	FAC736-1R	FRONT POLY SHEET, MODEL 680
	FAC736-2R	2nd POLY SHEET, MODEL 680
	FAC736-3R	3rd POLY SHEET, MODEL 680
	FAC736-4R	BACK POLY SHEET, MODEL 680
	FAC738KR	POLY FLOOR LINER KIT, MODEL 560
	FAC738APR	POLY AUGER LINER KIT, MODEL 560
	FAC738-1R	FRONT POLY SHEET, MODEL 560
	FAC738-2R	2nd POLY SHEET, MODEL 560
	FAC738-3R	3rd POLY SHEET, MODEL 560
	FAC738-4R	BACK POLY SHEET, MODEL 560
	FA757	CARRIAGE BOLT (560-Qt 39; 680-Qt 39 Auger 23)
	FA756B	ELEVATOR BOLT (560-Qt 57; 680-Qt 64 Auger 7)
	FA755	5/16" TORX SCREW (560-Qt 31; 680-Qt 31 Auger 30)